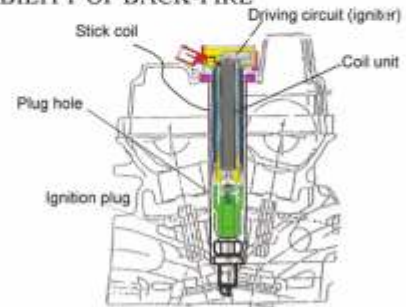


STICK COIL (IGNITOR INSIDE)

FEATURES

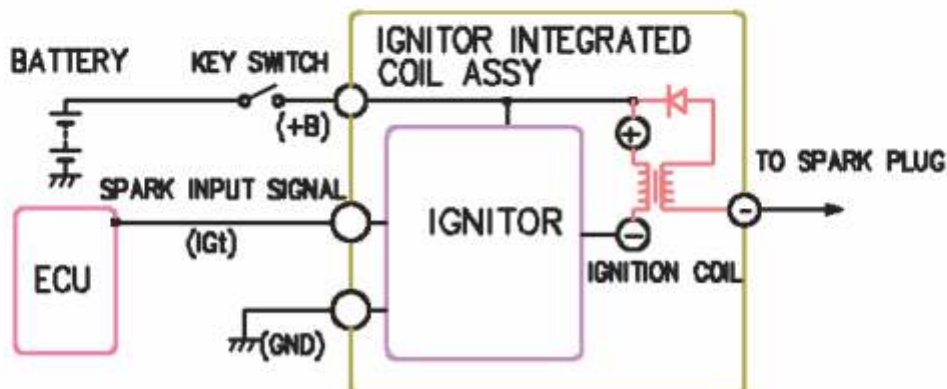
- COIL GOES INTO THE SPARK PLUG HOLE
- NO H/T CABLE : COMPACT LAYOUT / BETTER APPEARANCE
- NO H/T CABLE : BETTER RELIABILITY
- DLI SYSTEM FOR ODD CYLINDER ENGINE
- HIGHER NUMBERS OF MULTIPLE SPARK IS POSSIBLE
- NEGATIVE DISCHARGE
- NO WASTE SPARK, HENCE NO POSSIBILITY OF BACK-FIRE



TECHNICAL DATA

▪ SUPPLY VOLTAGE	: 14.0 V
▪ OPERATING TEMPERATURE	: -30°C TO 120°C
▪ PRIMARY RESISTANCE	: 0.98 ± 5% Ω
▪ SECONDARY RESISTANCE	: 7.2 ± 10% KΩ
▪ SECONDARY VOLTAGE WITH 35 PF LOAD	: 30 KV MIN
▪ PRIMARY CURRENT RAISE TIME	: 1.8 ± 0.4 ms TO REACH 6.5 A
▪ ENERGY (INTO 1000V ZENER)	: 30 milli joules
▪ WEIGHT	: 160 g
▪ COIL DIA	: Dia 23.0 mm Max.

SCHEMATIC DIAGRAM

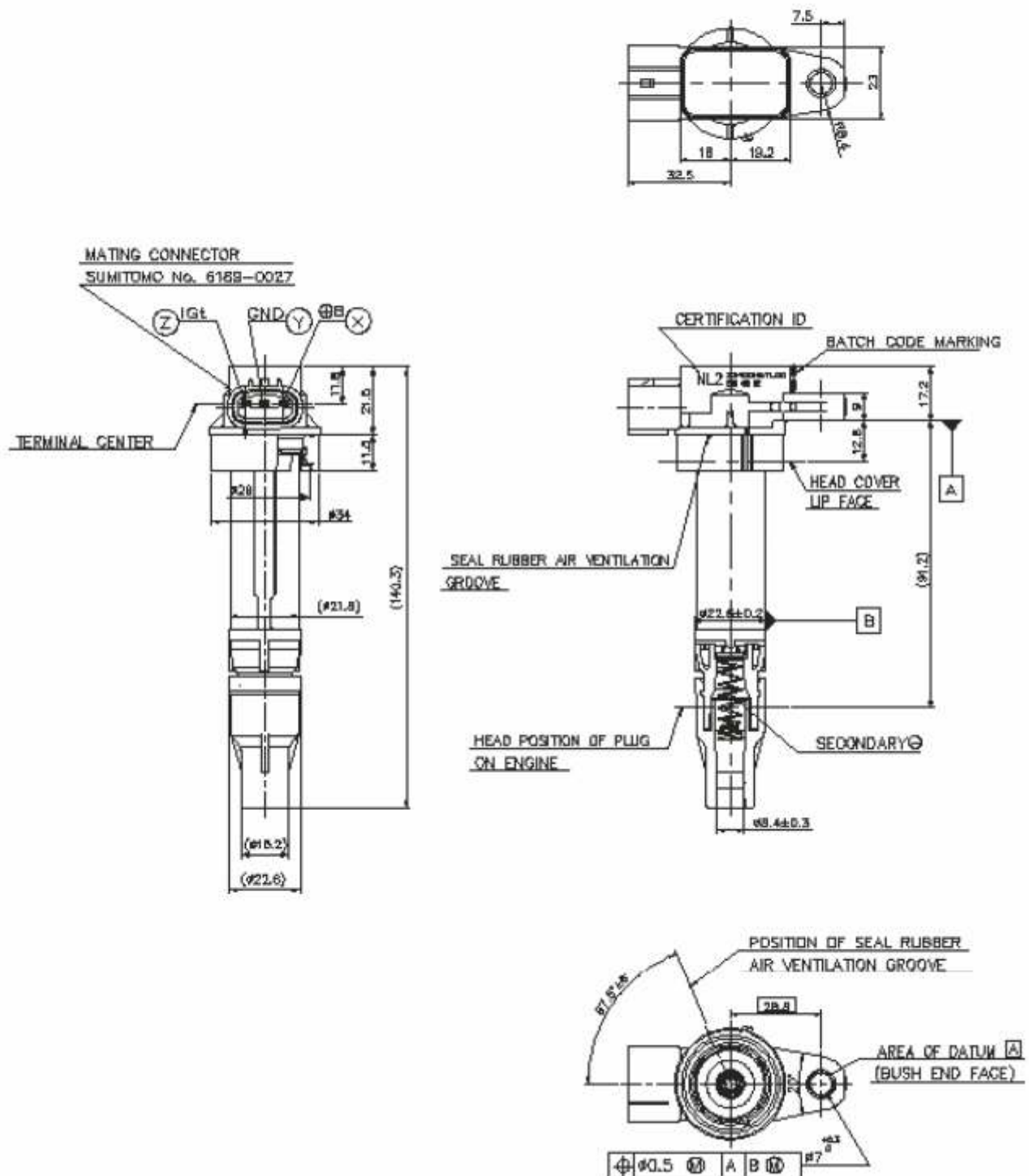


PRODUCT DATA SHEET

STICK COIL (IGNITOR INSIDE)

All Dimensions are in mm

OUTLINE DIMENSIONS



This product can only be used in approved applications and in accordance with maintenance requirements and replacement intervals. This information is available on request.