

Type : SM82 12V Starter Motor



APPLICATION

Light weight pre-engaged Starter Motor designed for petrol engines up to 1500 cc capacity (4 cylinder engines)

RATINGS:

Electrical

System Voltage : 12V
Polarity : Negative earth

Thermal

Operating temperature range : -30°C to +93°C
For operations below - 5°C : Consult Lucas-TVS for recommendations on battery capacity and cold starting aids.

CHARACTERISTICS:

Performance data at + 20C with 45AH fully charged battery.
For full load conditions, the following typical power, lock torque and run torque values are as stated below:

Mechanical:

Power output : 0.8kw

Operating of Solenoid Switch

Pull-in voltage 8 V max. when pinion travel is restricted to 2 mm.
Performance curve and principal dimensions are given overleaf.
Fully detailed drawing available on request.
Weight : 4.03 kgs (approx)

FEATURES:

Pre-engaged Starter Motor with Roller Clutch for over run Protection.
Rotation : Clockwise (viewed from drive end)

Fixing:

Flange mounted to fly wheel housing. Fixing bracket configuration to suit individual installation.

Pinion:

An 8 teeth 2.54 Module Pinion is available, as standard. Other Pinion types are also available on request.

TERMINATIONS :

Stud Terminations:

Battery : M8 x 1.25
Solenoid : 1/4" Lucar Blade

Enclosures :

Externally protected (except from bell housing) against water and oil spray.

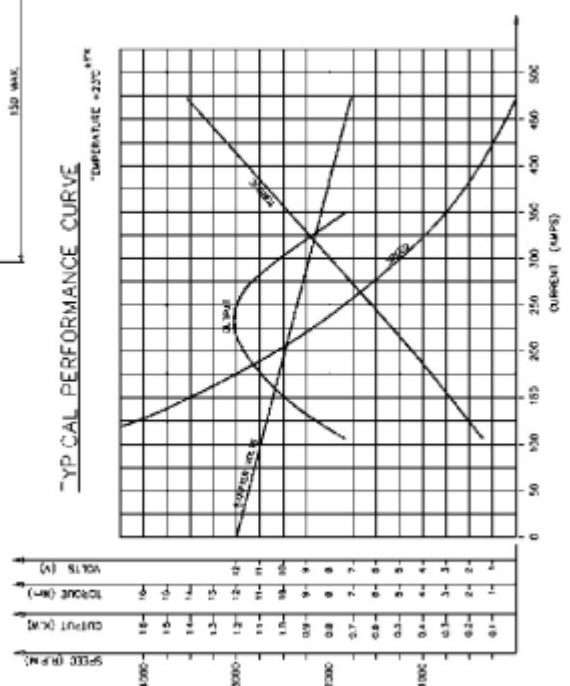
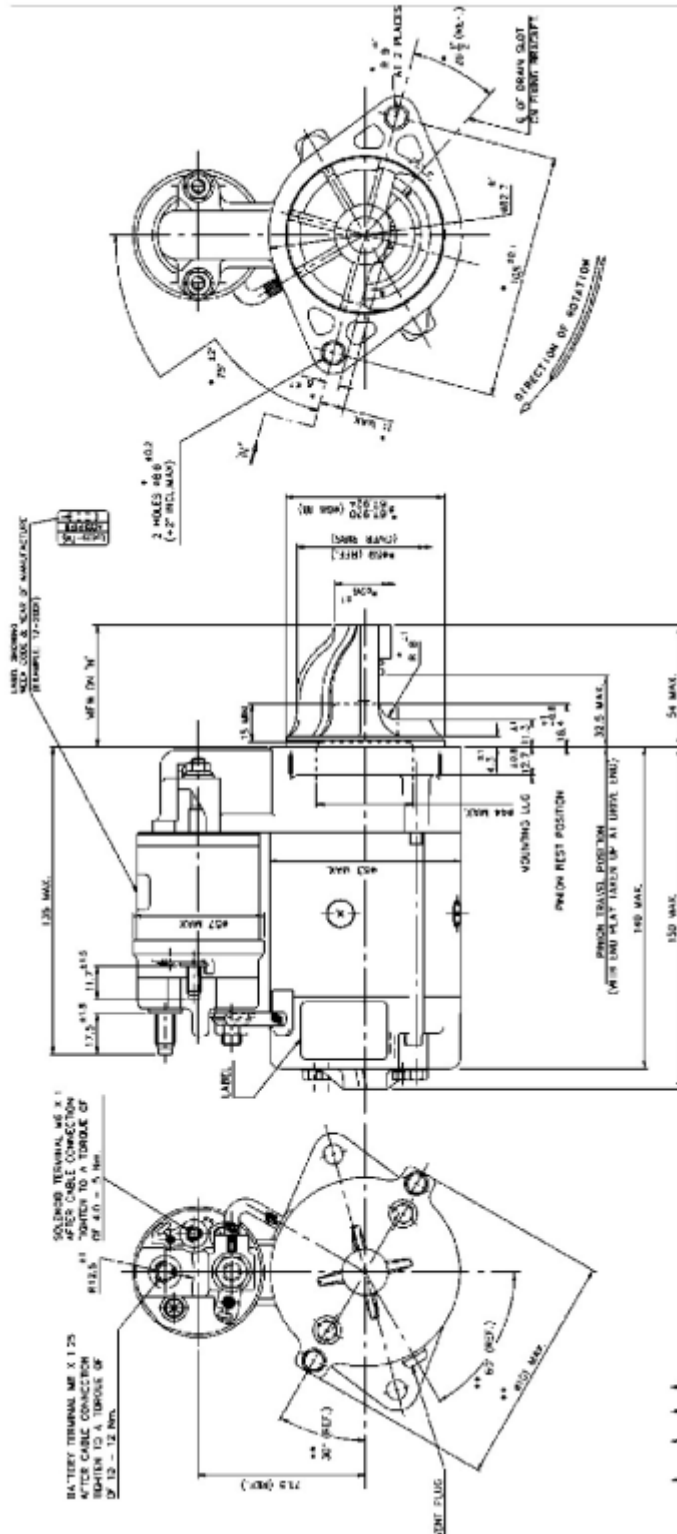
Condition	Voltage (Volts)	Current (Amps)	Torque (Kg-m)	Speed (RPM)
No Load	11	50max	-	5000 min
Load	9.5	270 max	0.70 min	1200 min
Locked	7.77	600 max	1.30 min	-

PRODUCT DATA SHEET



Type : SM82 12V
Starter Motor

All Dimensions are in mm



This product can only be used in approved applications and in accordance with maintenance requirements and replacement intervals. This information is available on request.