



Type : M14 12V Starter Motor



APPLICATION:

Pre-engaged starter motor designed for light commercial vehicles, powered by diesel engines of upto 3.5 litres capacity.

RATINGS :

Electrical:

Voltage : 12 Volts
System : Earth Return

Mechanical:

Rotation : Clockwise (Viewed from Drive end)

Temperature Range : Operating temperature range -5°C to +90°C for operations down to -20°C Consult Lucas-TVS for recommendations on battery capacity and cold cranking aids.

CHARACTERISTICS:

Performance data at + 25°C.

Mechanical:

For full load conditions under which the following minimum power, lock torque, and run torque values apply. Refer Performance Curve overleaf.

Weight	: 10 kg. (approx.)
Dimensions	: Principal dimensions are given overleaf. Detailed drawing available on request.
Fixing	: Flange mounted to fly wheel having with three fixing holes on a pitch circle dia to suit installation.
Pinion	: Various pinion forms are available to suit wide range of application.
Enclosures	: Normal protection against water and oil splash.

TERMINATIONS:

Stud Terminations:

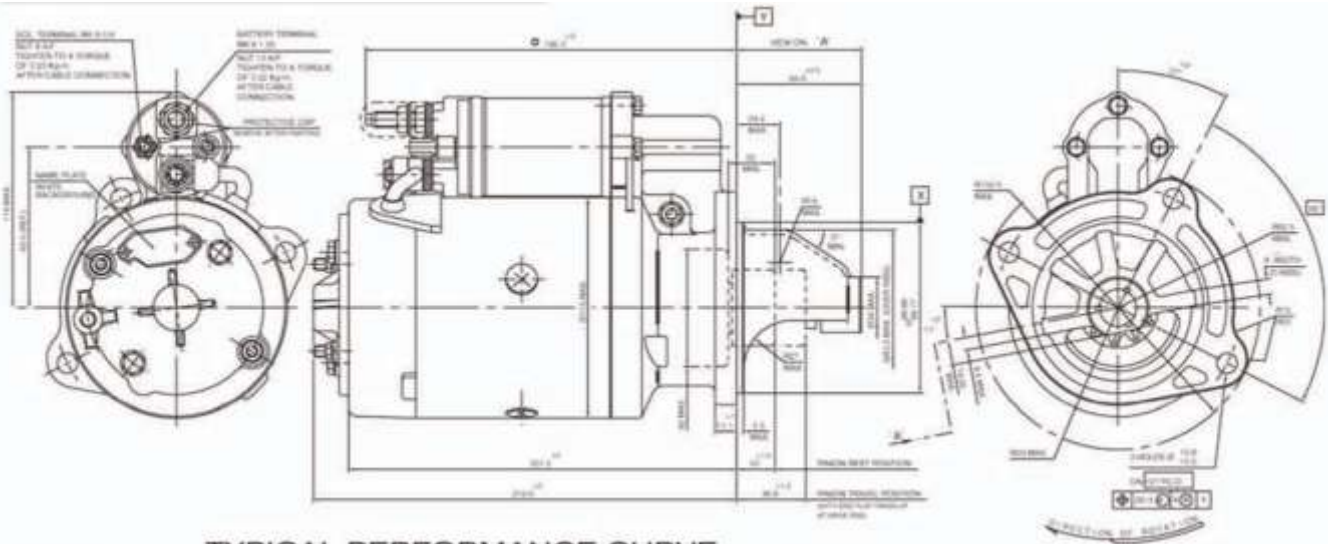
Earth Terminal	: M8 x 1.25
Main Terminal	: M8 x 1.25
Solenoid Terminal	: M5 x 0.8

PRODUCT DATA SHEET

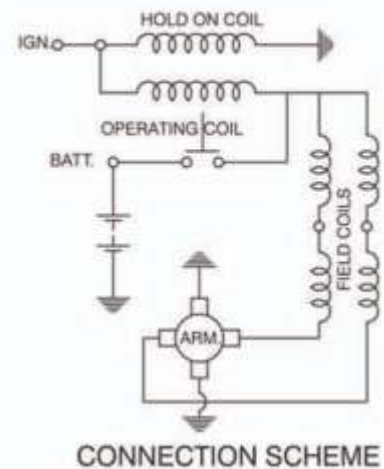
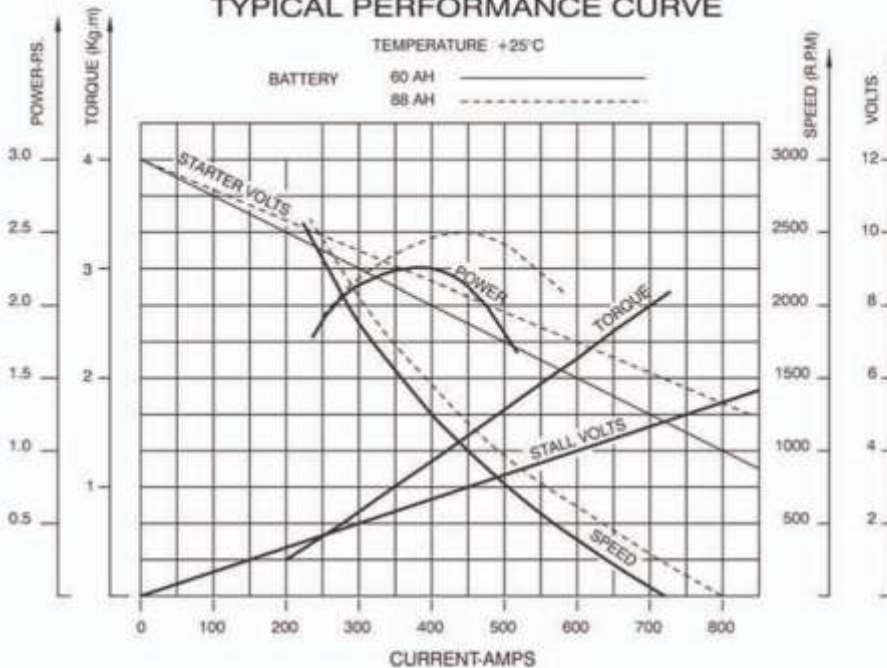


Type : M14 12V
Starter Motor

All Dimensions are in mm



TYPICAL PERFORMANCE CURVE



PINION DETAILS	
No. OF TEETH	10
MODULE	3.175/2.54
PRESSURE ANGLE	20°

PERFORMANCE TEST VALUES										
ELECTRICAL	LOCK VALUES			RUN TEST VALUES				LIGHT RUN VALUES		
	CURRENT (AMPS)	VOLTAGE (VOLTS)	TORQUE (N-m)	CURRENT (AMPS)	VOLTAGE (VOLTS)	TORQUE (N-m)	SPEED (R.P.M)	CURRENT (AMPS)	VOLTAGE (VOLTS)	SPEED (R.P.M)
	800 MAX.	5.0	25 MIN.	420 MAX.	8.5	10 MIN.	1350 MIN.	100 MAX.	11.5	5000 MIN.

This product can only be used in approved applications and in accordance with maintenance requirements and replacement intervals. This information is available on request.