

## Type : 2SM114 12V Starter Motor



### RATINGS

#### Electrical

System Voltage : 12 V

#### Mechanical:

Rotation : Normally clockwise  
(viewed on drive end)

#### Thermal

Operating air temperature range : 0°C to +90°C

### CHARACTERISTICS

#### Mechanical

For full load conditions under which the following typical power, lock torque and run torque values apply.

Power : 1.9KW.  
Lock Torque : 2.4 kg.m. minimum at 5.3 V and 760 amps maximum.  
Run Torque : 1.0 kg.m. minimum at 8V and 440 amps maximum and 1000 R.P.M.  
Dimensions : Principal dimensions are given overleaf. Fully detailed drawings are available on request.  
Weight : 11.0 kgs. approx.

### FEATURES

#### Fixing

Flange mounted to fly wheel housing spigot location diameter, and two or three fixing holes on a pitch circle diameter to suit the installation.

#### Pinion

Standard pinion form 10 teeth 3.175/2.54 Module 20° pressure angle. Alternative pinion forms to suit specific applications by arrangement.

### TERMINATIONS

#### Stud Terminations

Main : M8 x 1  
Earth : M7 x 1  
Solenoid : M5 x 0.8

#### Enclosure

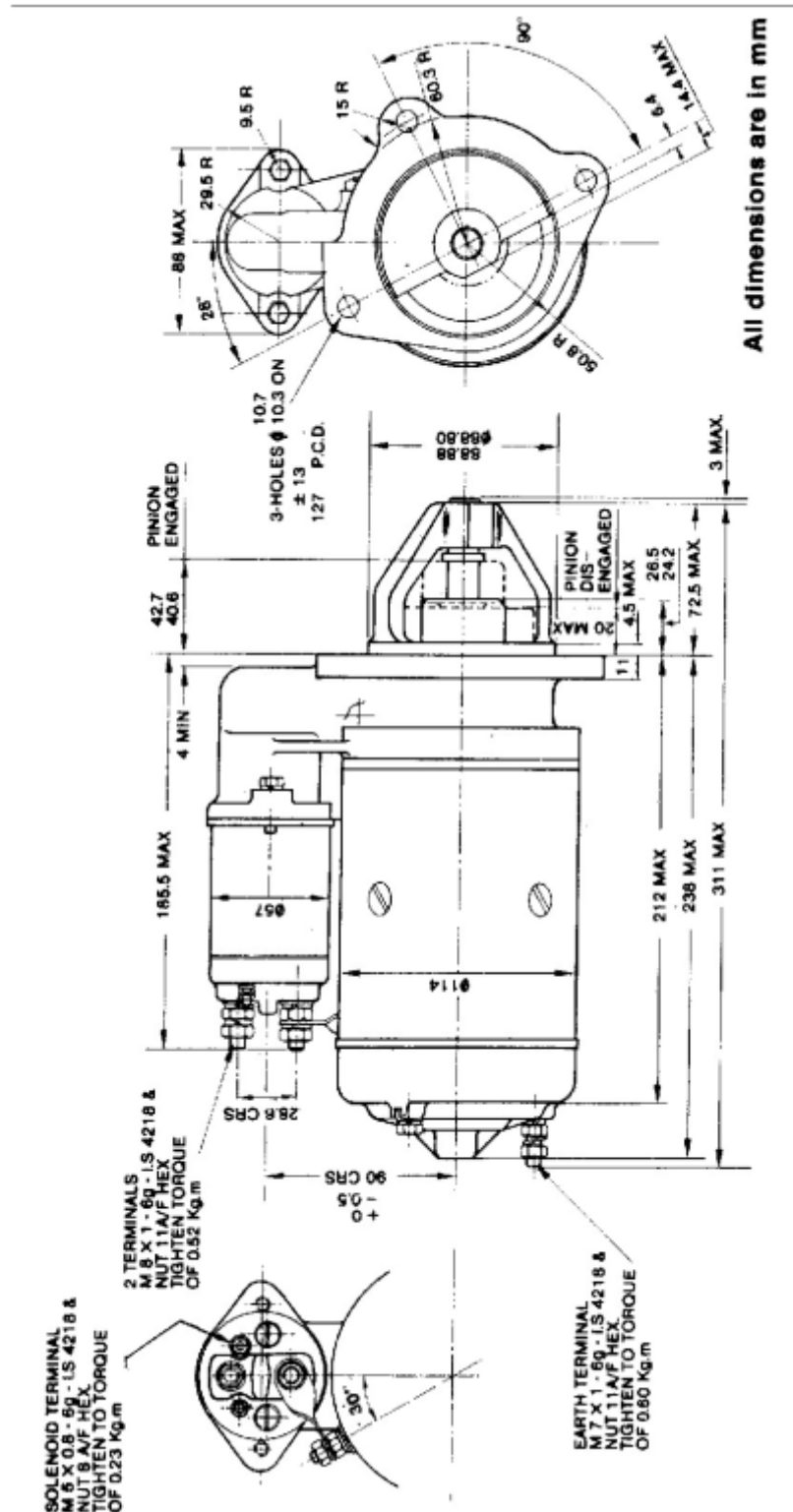
Externally protected (except from bell-housing) against water and oil splash.)

# PRODUCT DATA SHEET



Type : 2SM114 12V  
Starter Motor

All Dimensions are in mm



All dimensions are in mm

This product can only be used in approved applications and in accordance with maintenance requirements and replacement intervals. This information is available on request.