

TYPE :
15SW61 – 12V – 52 Nm Wiper System
DISCRETE LINKAGE SYSTEM



APPLICATION :

Designed for windshield wiping on MCV-HCV applications

RATINGS:

Electrical

System voltage : 12V
Polarity : Negative earth

Thermal

Operating ambient temperature range : -40°C ~ +80°C

Characteristics

Electrical

Typical light running current (wet screen)
Normal speed : 3 Amps
High speed : 4 Amps

Mechanical

Rated torque at output gear (cold) : 50Nm at 13.5 volts

Normal wiping speed (operating)
Normal speed : 34 wipes/minute
High speed : 49 wipes/minute

Direction of rotation :
Anti-clock (viewed from rotay link)

Weight : 3.6 Kg
(system+motor)

Motor : 2.0 Kg

Features

- Single /Two speed motor output
- Adhesive fixed high energy magnets
- Radio interference suppression by LC filter
- Thermal protector provided to prevent armature burning under motor locked condition.
- Channel link with plastic moulded bearings with adjustable centre
- Steel pivot housing with bearings

Mountings

Three point stud fixing from gear box base with 72mm PCD

Life

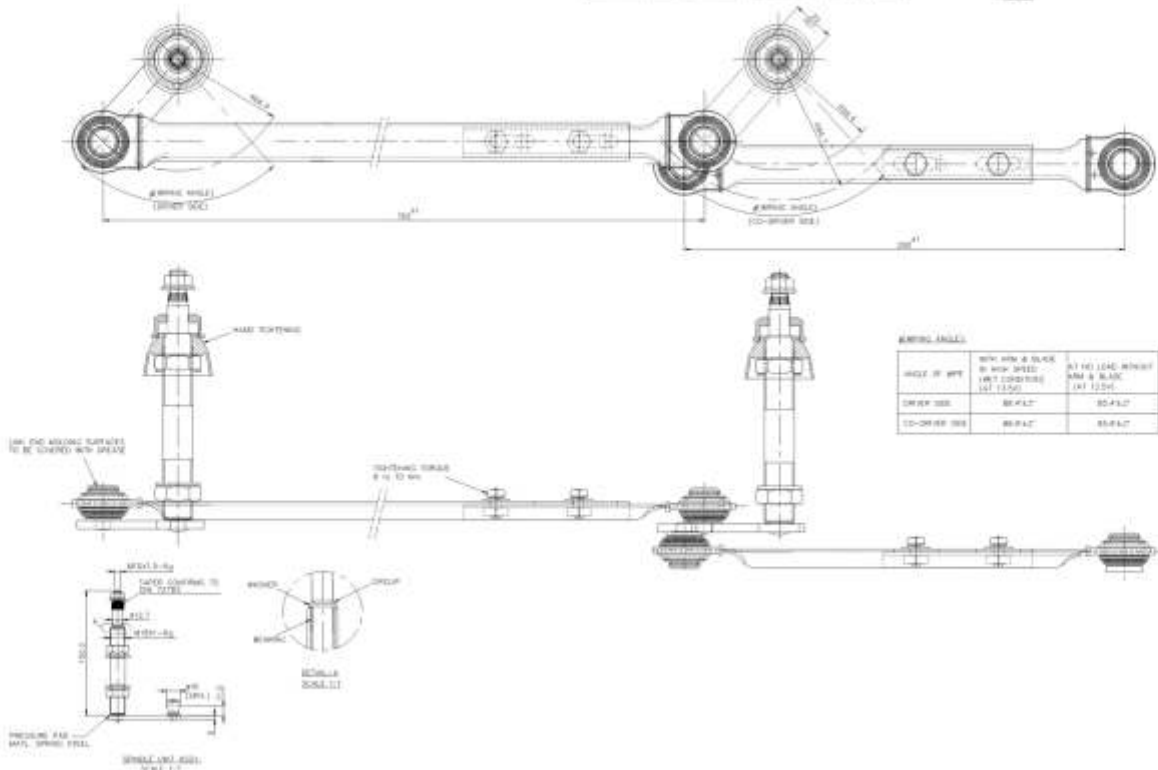
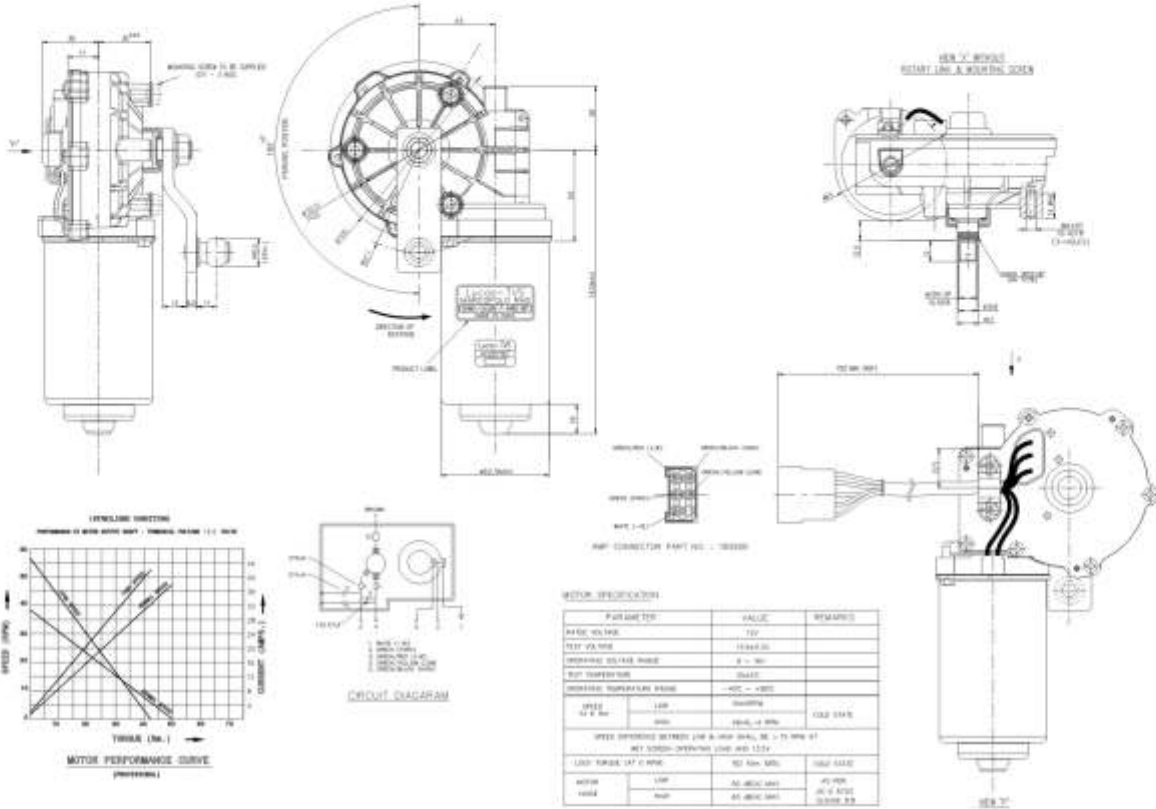
Continuously rated for 500 hours/1.5 million cycles.

PRODUCT DATA SHEET



All Dimensions are in mm

TYPE :
15SW61 – 12V – 52 Nm Wiper System
DISCRETE LINKAGE SYSTEM



This product can only be used in approved applications and in accordance with maintenance requirements and replacement intervals. This information is available on request.